

# Light Truck Battery



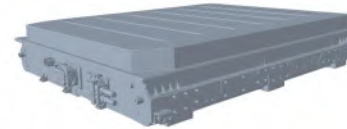
## Function introduction

Acquisition function: single voltage, temperature, current, total voltage acquisition; measurement range of single battery voltage: 0 <UD <5V; temperature measurement range: -40~125°C.

It has the function of voltage detection, total voltage of lithium battery pack, and charge / discharge current detection. It has the SOC estimation function.

Protection function: after temperature, single voltage, total voltage, and current exceeded the protection threshold.

Have the function of resting position.



## Matters need attention

### warn!

Never put your batteries in the fire, heat them, or store them in an environment above the temperature specified in the specification.

Do not attach the positive and negative extremes to the charger or device.

It is forbidden to contact the positive and negative poles of the batteries with a wire or any metal (such as a necklace or a hairpin). If so, these batteries are transported and stored together, which may cause a short circuit.

Do not hammer or step on the battery, and use no other ways to strike the battery.

Do not dismantle or change the external structure of the battery.

Never soak your batteries in water or wet them.

### pay attention to!

When the battery runs up, please charge it promptly (after 15 days).

The battery should be charged with the original charger, and according to the correct operation instructions, the voltage, temperature and other batteries are within the prescribed range, so as to ensure the safe and effective use of the battery.

Please stop using the battery in abnormal conditions such as odor, discoloration, noise, leakage, and serious deformation.

When the electrolyte leaks into the skin and eyes, please rinse with water and see a doctor immediately.

Please place the battery beyond the pet and the child, and prohibit the child from touching the battery.

The battery pack is prohibited to be used in series. If you need a series application, please contact the manufacturer for consultation.

The battery pack is prohibited to be used in parallel. If you need a series application, please contact the manufacturer for consultation.

The battery should be stored at room temperature and should be charged to 40% to 60% of the electricity. To prevent the battery from going down, charge every month.

The battery should be used under the specified conditions and not stored for more than 3 months.

For batteries stored for more than a year, performance is not guaranteed.

## System parameters

order number	project	characteristic
1	Rated capacity (Ah)	125
2	Rated energy (k.wh)	38.4
3	nominal voltage (V)	307.2
4	size (mm)	1140*924*240
5	weight (Kg)	≈295
6	Charging stop voltage (V)	350
7	Discharge cut-off voltage (V)	240
8	Rated Charge current (A)	100
9	Rated discharge current (A)	125
10	30s discharge current (A)	180
11	communication	CAN communication
12	Charge and discharge with different mouth	The same mouth
13	levels of protection	IP67
14	working temperature (°C)	Charging charge: 0~60 Discharge supply: -30~60
15	Storage temperature: (°C)	0~45
16	shipment SOC	30%~50%
17	cycle life	≥3500 @25°C

## Protection parameters

order number	project	content	acceptance standard	remarks
1	Single overcharge	Single string protection voltage	3.7V	Can set
		Overpressure protection delay	2s0	Can set
2	Single over	Single string protection voltage	2.5V	Can set
		Over-release protection delay	2.0s	Can set
3	Total pressure overcharge	Overpressure protects voltage	355V	Can set
		Overpressure protection delay	2.0s	Can set
4	Total pressure over	Under pressure protection voltage	240V	Can set
		Default pressure protection delay	2.0s	Can set
5	Charging over the flow	Charge overcharge protection value	180A	Can set
		Charge overcharge delay	2.0s	Can set
6	Discharge overflow	Discharge overprotection value	225A	Can set
		Over-current discharge delay	2s	Can set
7	temperature	Battery charging for high temperature protection	65°C	Can set
		Battery to charge for low-temperature protection	0°C	Can set
		Battery discharge high temperature protection	65°C	Can set
		Battery discharge is under low-temperature protection	-10°C	Can set